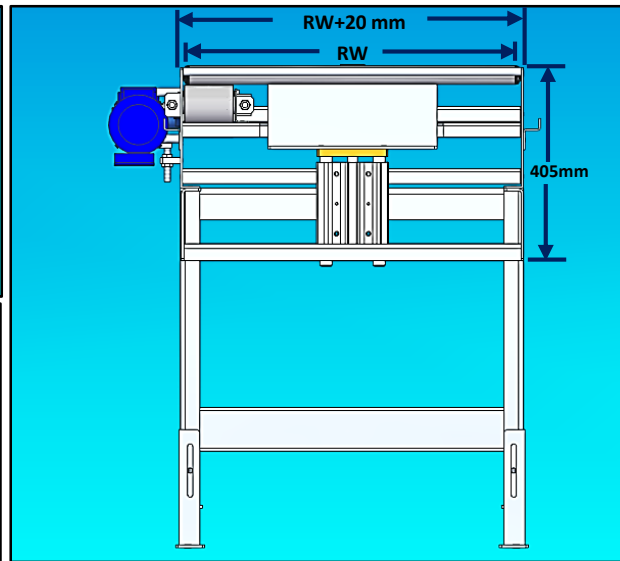
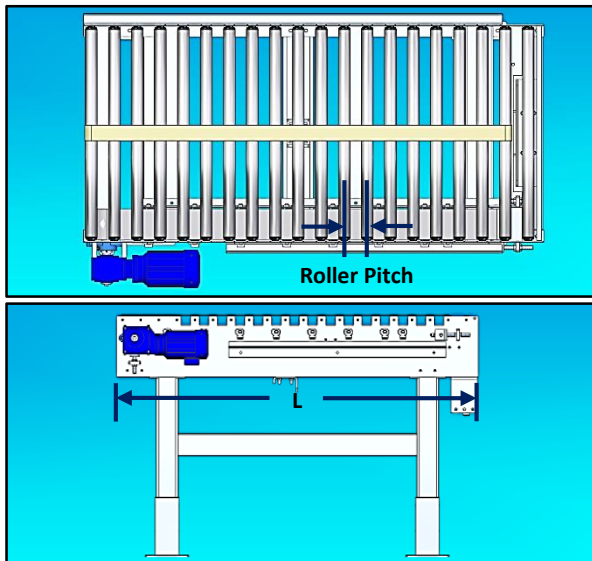


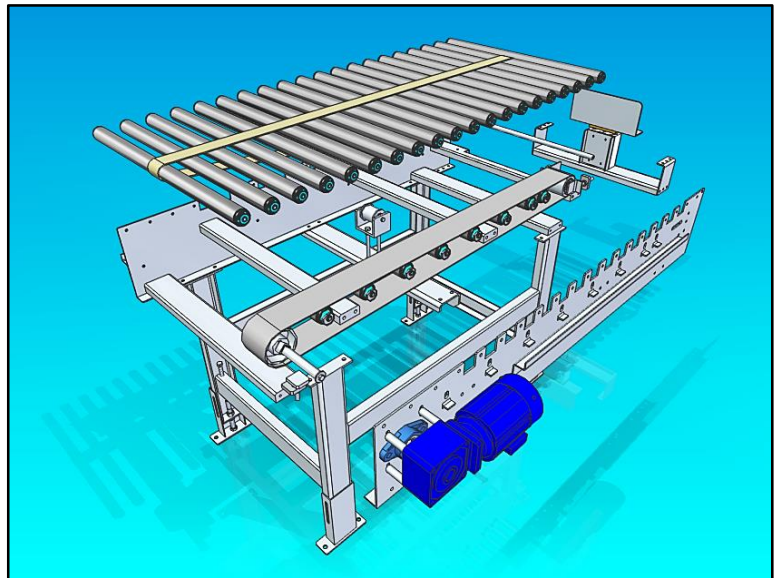


STATION CONVEYOR, MODEL: STC



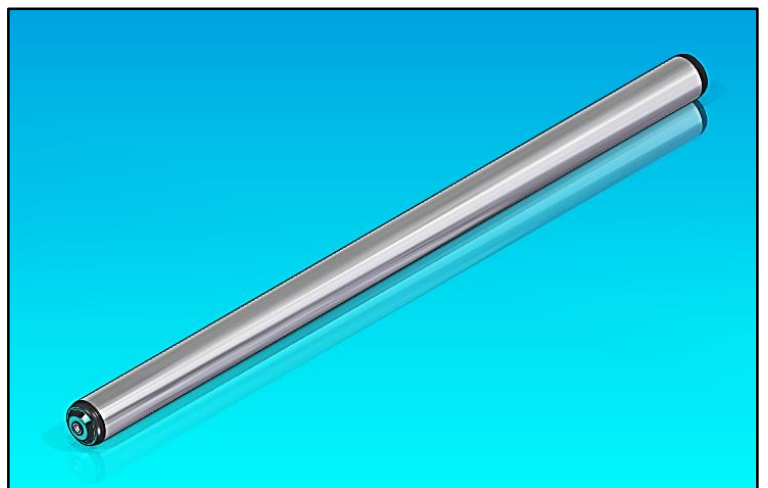
Technical Specification

MODEL	Station Conveyor
ROLLER WIDTH	690mm
LENGTH	1,500mm
HEIGHT	405mm (Minimum)
DRIVEN FORCE	Live
FRAME	Angle Frame 250 x 40 x 4T
DRIVEN METHOD	Flat Belt (Width 100mm)
BELT JOINT	Lacing or Endless Joint
SPEED	10~25 m/min
MOTOR	SUMITOMO, AC200V
POWER	0.4, 0.75, 1.5, 2.2, 3.0 kW



Roller Specification

ROLLER BRAND	DAMON
Model	1200

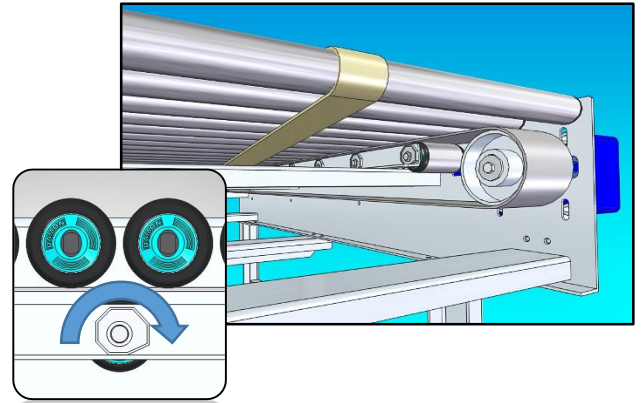


* Please contact us if your application need a customized specification.

Main Features and Advantages

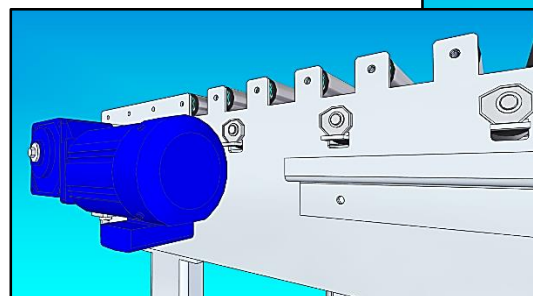
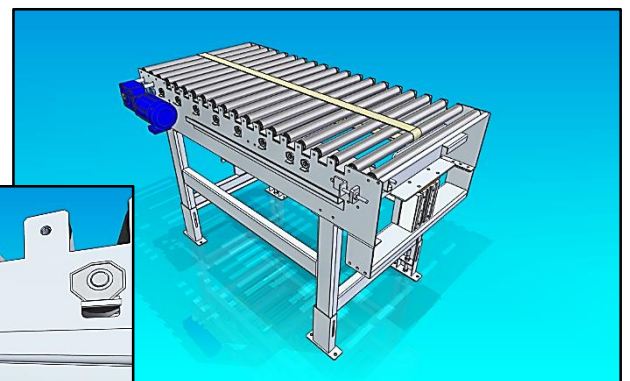
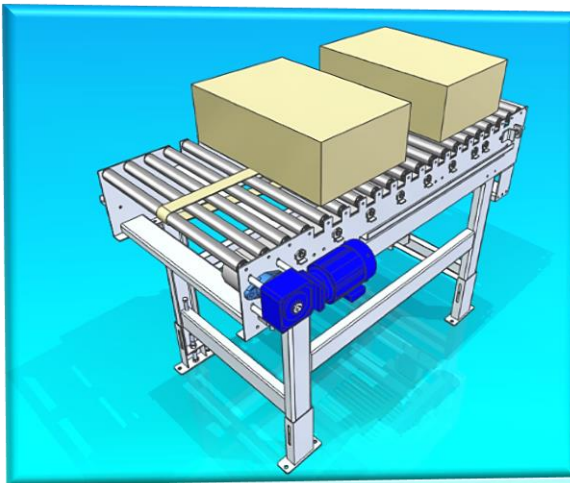
Features of using Station Conveyor

- Flat belt runs underneath the roller conveyor and is pressed against the pressure roller, which are positioned under the conveyor
- The V-belt is using the "MITSUBOSHI" brand red tape high resistance belt
- The clearance in between the rollers will allow the gripper fingers to slot in for picking the bags
- Pop up roller concept is integrate into the design, allow rollers to pop up if anything is jam in between the rollers



Advantages using Station Conveyor

- Minimum back pressure accumulation for accumulation conveying purpose
- The centre belt will help in transfer the bags more positive in the station conveyor
- Top of the rollers are above the side frames, allow the conveyor to handle a wider range of products with different size
- Combination of high performing components and simple frame design to deliver a truly cost effective conveyor
- Pop up roller design to ensure safety and avoid causing damage to both user and conveyor



For further enquiry please contact us at

Singapore Headquarters
ROBOTPACK FLEXIBLE AUTOMATION SYSTEM (S) PTE. LTD.
 10, Admiralty Street, #03-63 Northlink Building
 Singapore 757695

Tel : +65-66550365 , Fax : +65-65600694
 Email : sales@robotpack.com.sg
 web : http://www.robotpack.com.sg

Malaysia Office
ROBOTPACK FLEXIBLE AUTOMATION SYSTEM (M) SDN. BHD.
 No. 20, Jalan Tabla 33/21
 Seksyen 33 40400 Shah Alam,
 Selangor, Malaysia

Tel : +603-5122 8988 , Fax : +603-5122 0988
 Email : sales@robotpack.com.sg
 web : http://www.robotpack.com.sg

Johor Bahru Factory
 Lot 58908, No.3399, Jalan Pekeliling Tanjung
 27/2, Kawasan Perindustrian Indahpura,
 81000, Kulai, Johor, Malaysia.

Tel : +6012-7272896
 Email : sales@robotpack.com.sg
 web : http://www.robotpack.com.sg